

Yamagata Prefectural University of Health Sciences



Yamagata Prefectural
University of
Health Sciences

Message from the President



Yamagata Prefectural University of Health Sciences (YPUHS) was initially founded in 1954 as Yamagata Prefectural Advanced Nursing School. In April 1997, the nursing school was re-organized to a 3-years system college for health professions including registered nurses, public health nurses, midwives, physical therapists and occupational therapists. The college was then expanded as a university of 4-years system consisting of the Department of Nursing, the Department of Physical Therapy and the Department of Occupational Therapy in April, 2000. The master course and the doctoral course of the Graduate School of Health Sciences were also established in 2004 and 2017, respectively.

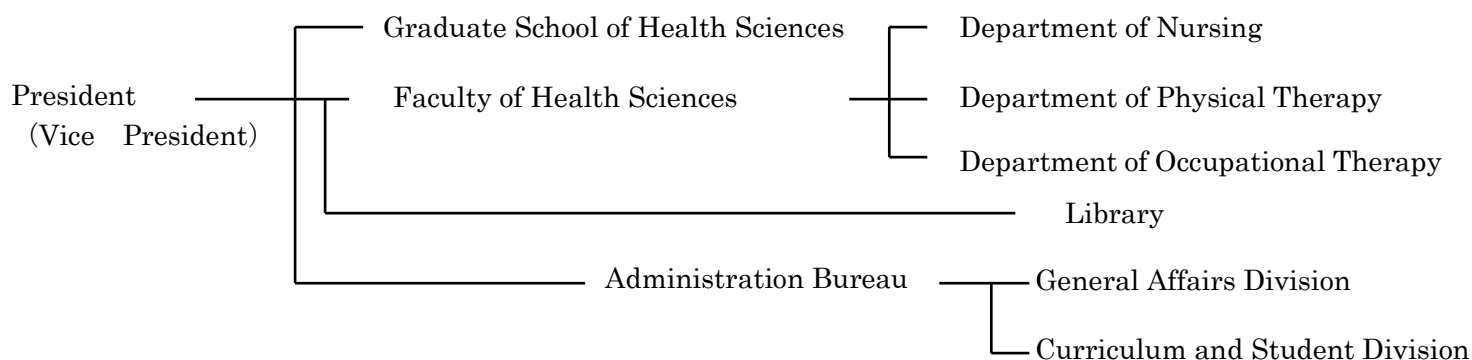
YPUHS aspires to foster diversification and sophistication to deal with advanced nursing care and rehabilitation, a high level of knowledge and skill to offer the appropriate support towards safe and reliable care services, and nurturing rich creativity and accurate problem solving qualities. Considerations have also been made to improve learning from others by having students of each field work together so that they can operate together in the future, which is so important in today's interprofessional collaboration. We will be able to cultivate those basics to help students in one field understand the roles, health and medical care issues in other fields to enhance cooperation in the real world of welfare.

YPUHS is also concerned, as one of our educational objectives, to encourage students to perform on the worldwide stage with a proper international perspective. Indeed, YPUHS have achieved academic and educational cooperation continuously with both the University of Colorado (Nursing and Physical Therapy) and the Colorado State University (Occupational Therapy) in Colorado, U.S.A for over 10 years.

A beautiful grass lawn covers the neighboring park through which the clear waters of the Takase River flow that the salmon swim up to lay eggs in autumn. The university, built in European style, lies to one side, while the Yamagata Prefectural Central Hospital, providing the majority of our practical training, borders the other side of this park. I believe that such beautiful environment supports the students converse with new friends and teachers, cultivate trust amongst them, and fulfill their health science dreams.

The Fifth President of
Yamagata Prefectural University of Health Sciences
Kunihiko Maeda, M.D., Ph.D.

Organizational Structure



The Full Time Faculty Members

(Apr.1st.2020)

	Professors	Associate Professors	Lecturers	Assistant Professors	Total
President	1				1
Graduate School	(15)	(13)	(9)	(2)	(39)
Department of Nursing	7	8	4	10	29
Department of Physical Therapy	3	2	4	2	11
Department of Occupational Therapy	5	4	1	2	12
Total	16	14	9	14	53

() concurrently working in Graduate and Under Graduate education

Admission Capacity

(Apr.1st.2020)

	1 st year	2 nd year	3 rd year	4 th year	Total
Graduate School of Ph.D. program	3	3	3		9
Graduate School of Master's program	12	12			24
Department of Nursing	63	63	67※	67※	260
Department of Physical Therapy	20	20	20	20	80
Department of Occupational Therapy	20	20	20	20	80
Total	118	118	110	107	453

(※ including transfer students)

Educational Philosophy

We provide content that includes broad-based education, whole-hearted humanity, a high degree of expertise and technical skill.

We return the results of our educational and clinical researches to the local region, as well as fostering future leaders in the field of nursing, physical and occupational therapy who can participate and contribute to the health and welfare of the people of Yamagata, Japan and the world.

Educational Aim

The educational program is designed to educate students with the professional knowledge and skills that will enable them to play a key part in the medical and social welfare systems. Based on the philosophy of education, we uphold the following six educational aims.

- (1) To foster in our students moral understanding based on the dignity of life and society, and teach them to think and act flexibly, with comprehensive humanity.
- (2) To foster the ability to morally act on the people by teaching professional knowledge and skills.
- (3) To foster the ability to understand the roll of professional health workers, and to respond with medical care through cooperation and collaboration with other specialists in the fields of health, medicine and welfare.
- (4) To foster the ability to develop health science through self-development and a willingness to do challenge unknown subjects.
- (5) To foster the ability to understand the diversity of our world, communicate with other cultures and act with an internationalized field of vision.
- (6) To foster the ability to understand a local culture and to develop the standard of health and medical care practices in local region.

History

- 1954 Established as Yamagata Prefectural Nursing School of higher learning, to start more specialized instruction on nursing education in Yamagata Prefecture
- 1957 Restructured as Yamagata Prefectural Nursing and Public Health Nursing School. Founded public health nursing course in the School
- 1973 Founded Midwife course in the School
- 1997 Established as Yamagata School of Health Sciences (3-year course) including
 - Department of Nursing
 - Department of Physical Therapy
 - Department of Occupational Therapy
- 2000 Restructured as Yamagata Prefectural University of Health Sciences (bachelor course) including
 - Department of Nursing
 - Department of Physical Therapy
 - Department of Occupational Therapy
- 2004 Established Graduate School of Health Sciences
 - Department of Health Sciences (2 years master's program)
- 2017 Established the last part of the doctor course, Ph.D.program (3 years doctor's program)

General Education

In their first year, students will receive a general education that includes the subjects which are necessary to understand human thinking and health welfare. The subjects cover such fields as: philosophy, psychology, sociology, economics, social welfare, statistics, foreign language and sports. This area of study forms an important base for the students' medical care and welfare studies before they start to specialize in their professional development in their second year.



		First year	Second year	Third year
General Education	General Academic Subjects	Psychology Philosophy Religion Literature Music Art Biology/Chemistry/Physics Biology/Chemistry/Physics (Lab) Mathematics Statistics Bioethics Sports Exercise Law History Economics Sociology Political Science International Relations English I English II English Expression I English Expression II Information Science	Pedagogy Environmentology Japanese Expression Cultural Anthropology English III (N) Medical English Conversation Practical English Chinese (N) Korean (N)	
	Foundation for Specialized Studies	Human Development Health and Wellness Anatomy Histology Physiology I Physiology II (P,O) Biochemistry Clinical Nutrition (N) Pathogenic Microbiology Gross Anatomy (Lab) (P,O) Physiology (Lab) (P,O) Pathology Rehabilitation Medicine (P,O) Orthopedics (P,O)	Clinical Psychology Counseling (N,O) Immunology Pharmacology Clinical Pharmacology Basic and Clinical Approach to Adult Disorders I Basic and Clinical Approach to Adult Disorders II Basic and Clinical Approach to Adult Disorders III (N) Emergency and Critical Care Medicine Family Sociology (N) International Health Studies Psychosomatic Disorder Behavioral Neurology Psychiatry Basic and Clinical Approach to Pediatric Disorders (N) Children with Disability (P,O) Neurology (P,O) Japanese Social Welfare Systems	Interprofessional Collaboration in Medical and Health Practice

DEPARTMENT OF NURSING

Education in Nursing

Science and technology have been seeing rapid developments in recent times. New therapies and technologies are routinely used in clinical practice, especially in the field of medicine and health science. Under such circumstances nurses should be prepared to fulfill the requirements of the times in the 21st century.

The curriculum of nursing education is composed of two main parts. Basic nursing science and clinical nursing practice, which follow after the conclusion of the general education.

Basic Nursing Science

Fundamental elements of basic nursing science are nursing theories and nursing (practical) methodologies.

Clinical Nursing Practice

Clinical nursing practice focuses on knowledge essential for assessment and treatment of patients.

This area of study includes adult/elderly nursing, mental health/psychiatric nursing, public health nursing, child health nursing and maternal health nursing. Students have the opportunity to learn methods of practice required to provide nursing care and skills in the clinical practice.

Present & Future Research Projects in the Department of Nursing

The full time staff members of the Department of Nursing include 8 professors, 7 associate professors, 5 lecturers and 10 assistant professors. All staff members not only teach, but also conduct research in various fields of nursing. We are now very interested in the following fields of research.

- Fundamental studies on pain control in nursing care technology
- Health care of patients with apoplexy and prevention of bed-rest in such patients within the elderly society in the rural community
- Development of a multi-aspects evaluation system of education to provide support for society's elderly
- Restructuring of the concept and theory of maternity development in the socio-cultural background in Japan
- Restructuring of the concept of the function of nursing in home-based health care for patients
- Research of nursing terminology
- Educational studies on clinical practice in nursing care

		First year	Second year
Nursing		Introduction to Nursing Fundamental Nursing Skills I Nursing Ethics Nursing Theory Human Relationship for Nursing Fundamental Nursing Practice I Introduction to Gerontological Nursing Gerontological Nursing Practice I Local Life & Culture	Fundamental Nursing Skills II Theory of Nursing Process Health Assessment Family Nursing Fundamental Nursing Practice II Principles of Adult Nursing Adult Nursing (Acute and Perioperative) I Adult Nursing (Chronic Illness and Conditions) I Psychiatric and Mental Health Nursing Introduction to Maternity Nursing Maternity Nursing I Introduction to Pediatric Nursing Pediatric Nursing Practice I Home Health Nursing Home Care Nursing Mutual Communication and Cooperation General Nursing Basics
	Community Health Nursing		Introduction to Community Health Nursing Introduction of Epidemiology Health and Welfare Policy and Management
	Midwifery		Introduction to Midwifery Reproductive Medicine Reproductive Health Nursing



Qualifications Granted

Department of Nursing

1. Bachelor's degree in nursing
2. Qualifications attainable
 - 1) Qualification of candidacy for the national examination for nurses
 - 2) Qualification of candidacy for the national examination for public health nurses (elective)
 - 3) Qualification of candidacy for the national examination for midwives (elective)

Third year	Fourth year
Adult Nursing (Acute and Perioperative) II Adult Nursing (Chronic Illness and Conditions) II Adult Nursing (Acute and Perioperative) Practice Adult Nursing (Chronic Illness and Conditions) Practice Gerontological Nursing Practice II Methods in Psychiatric Nursing Psychiatric Nursing Practice Maternity Nursing II Maternity Nursing Practice Pediatric Nursing Pediatric Nursing Practice II Home Care Nursing Practice Home-visit Nursing Practice Home Health Nursing Practice Nursing Management Introduction to Nursing Research I Introduction to Nursing Research II Methods in Gerontological Nursing	Nursing Education Health Risk Management Integrative Nursing Practice I Integrative Nursing Practice II Nursing Graduation Thesis End-of-Life Care International Nursing Readings of Academic Papers
Health Statistics School Health & Nursing Occupational Health & Nursing Community Health Nursing Community Health Nursing Practice Targeted Community Health Nursing Health Communication	Community Health Promotion Health Care System Community Health Nursing Administration Community Health Nursing Diagnosis Practice Community Health Nursing Practice
Midwifery : Care of Pregnancy Midwifery Practice : Care of Pregnancy	Midwifery : Care of Birth Midwifery : Care of Childrearing Community Health for Women and Children Administration and Management of Midwifery Care Midwifery Practice : Care of Birth Midwifery Practice : Care of Birth and Childrearing

DEPARTMENT OF PHYSICAL THERAPY

Education in Physical Therapy

Physical therapy is the art and science of physical treatment by means of therapeutic exercise, instruction, and physical modalities. Physical Therapy provides services to people and populations to develop, maintain and restore maximum movement and functional ability throughout one's lifespan.

Yamagata Prefectural University of Health Sciences PT program offers the bachelor's degree of physical therapy sciences. The mission of our program is to provide high quality academic and clinical educations for our students and to nurture qualified physical therapists with leadership. Our faculty have the expertise and clinical experience to teach and research in whole area of physical therapy. In addition, we have been actively working to collaborate with the University of Colorado Physical Therapy Program so that our faculty and students should get the opportunity of international exchange.

Our university has established a master's course since 2004 and a doctoral course since 2017 for postgraduates. These courses prepare the opportunity to develop a wide range of research and teaching skills and offer the master's and doctoral degree of Physical Therapy Sciences for students.

Research Projects in the Department of Physical Therapy

We have been studying a wide range of physical therapy fields. One of the main research areas is aging related issues of the motor system, because Japan is the most aged nation in the world and Yamagata is one of most aged prefectures in Japan.

Regarding research interests of individual professors, please refer to the faculty section of our homepage (<https://www.yachts.ac.jp/english/pt/>).

		First year	Second year
Physical Therapy	Fundamental Physical Therapy	Introduction to Physical Therapy Clinical Functional Anatomy Kinesiology I	Kinesiology II Kinesiology (Lab) Musculoskeletal Examination in Physical Therapy Musculoskeletal Examination in Physical Therapy Practicum Therapeutic Exercise Physical Modalities
	Musculoskeletal Conditions		Musculoskeletal Physical Therapy I
	Neurological Conditions		Physical Therapy Evaluation of Neurological Conditions
	Medical Conditions		
	Geriatric Disorder		
	Developmental Disorder Intervention to Functioning, Disability and Health		Physical Therapy in Developmental Disorder I Intervention for Activities of Daily Living Intervention for Activities of Daily Living (Lab)
Physical Therapy Research			
Practical Clinical Education	Clinical Education I		
Current Issues in Physical Therapy			



Qualifications Granted

Department of Physical Therapy

1. Bachelor's degree in physical therapy
2. Eligibility requirements for the national examination for physical therapist

Third year	Fourth year
Assessment of Physical Therapy Physical Modalities (Lab) Prosthetics and Orthotics Prosthetics and Orthotics (Lab)	Physical Therapy Service Management
Musculoskeletal Physical Therapy II Advanced Physical Therapy in Musculoskeletal Conditions	Advanced Physical Therapy in Neurological Conditions
Neurological Physical Therapy I Neurological Physical Therapy II Physical Therapy in Medical Conditions I Physical Therapy in Medical Conditions II Advanced Physical Therapy in Medical Conditions	Advanced Physical Therapy in Developmental Disorder Physical Therapy in Community Based Rehabilitation
Physical Therapy in Geriatric Disorder Advanced Physical Therapy in Geriatric Disorder Physical Therapy in Developmental Disorder II Community Based Rehabilitation	Physical Therapy Graduation Thesis
Physical Therapy Research Methodology Practice of Physical Therapy Research Methodology Clinical Education II	Clinical Education III Clinical Education IV
Manual Intervention In Physical Therapy I Manual Intervention In Physical Therapy II Biomechanical Measurement Techniques	Current Issues in Physical Therapy

DEPARTMENT OF OCCUPATIONAL THERAPY

Education in Occupational Therapy

The present needs in the field of health science and social welfare expect occupational therapists to respond rapidly to dramatic change in our social environment. Therefore, our school faculty assists not only in learning specialized knowledge but also in how to whole-heartedly provide service to the local community.

The education curriculum in the Department of Occupational Therapy is composed of two main parts: specialized subjects and clinical practice, which follow the completion of the general education.

Specialized subjects of occupational therapy

Specialized subjects of occupational therapy cover the understanding of disability and therapeutic processes in developmentally disordered, physiologically, neurologically, and psychiatrically affected subjects as well as elderly members of society.

Clinical Practice of occupational therapy

Clinical practice focuses on actual knowledge essential for assessment and treatment of subjects. This area of study includes clinical experience in the therapeutic interaction with disabled subjects and the decision-making process regarding therapy for each subject. Students have the opportunity to learn many methods and skills of occupational therapy in clinical practice.

Research Projects in the Department of Occupational Therapy

The full time faculty of the Department of Occupational Therapy includes five professors, three associate professors, two lecturers, and two assistant professors.

All faculty are involved in research projects. The main research projects are as follows:

- Basic and clinical research on cognitive disorders
- Psycho-physiological approach to cognitive disorders
- Motion analysis of disabled subjects
- Research on occupational performance in disabled subjects, etc.

		First year	Second year
Occupational Therapy	Occupational Therapy-Physical Disability		Occupational Therapy in Physical Disability Intervention for Physical Disability
	Occupational Therapy-Neurological Disability		Occupational Therapy in Neurological Disability Intervention for Neurological Disability
	Occupational Therapy-Psychiatric Disability		Occupational Therapy in Psychiatric Disability Intervention for Psychiatric Disability
	Occupational Therapy-Geriatrics		Occupational Therapy in Geriatrics Intervention for older adults
	Occupational Therapy-Cognitive Disability		Occupational Therapy in Cognitive Disability Intervention for Cognitive Disability
	Occupational Therapy-Developmental Disability		Occupational Therapy in Developmental Disability Intervention for Developmental Disability
	Activities of Daily Living		Activities of Daily Living Intervention for Activities of Daily Living (Lab)
	Fundamental Occupational Therapy	Principles of Occupational Therapy Basic Occupationology I Basic Occupationology II Kinesiology I	Kinesiology II
	Community-Based Occupational Therapy		Community-Based Occupational Therapy
	Occupational Therapy Evaluation	The Principles of Occupational Therapy Evaluation	Occupational Therapy Evaluation and Practice I Occupational Therapy Evaluation and Practice II
	Occupational Therapy Development		
	Fieldwork seminar	Fieldwork Seminar I	
Fieldwork	Fieldwork I a	Fieldwork I b	



Qualifications Granted

Department of Occupational Therapy

1. Bachelor's degree in Occupational Therapy
2. Qualification of candidacy for the national examination of occupational therapist.

Third year	Fourth year
Practicum Occupational Therapy for Physical Disability	
Practicum Occupational Therapy for Neurological Disability	
Practicum Occupational Therapy for Psychiatric Disability	
Practicum Occupational Therapy in Geriatrics	
Practicum Occupational Therapy for Developmental Disability	
Assistive Technology and Home Adaptation Assistive Technology and Home Adaptation(Lab)	
Theory of Occupational Therapy	Cross Cultural Occupational Therapy Study
	Community-Based Occupational Therapy II
Clinical Issues of Occupational Therapy Research Methods in Occupational Therapy	Occupational Therapy Graduation Research
Fieldwork Seminar II a Fieldwork Seminar II b Fieldwork Seminar III a Fieldwork Seminar III b	Fieldwork Seminar IV a Fieldwork Seminar IV b Advanced Occupational Therapy
Fieldwork II Fieldwork III	Fieldwork IV

Graduate School of Health Sciences

Message from Dean of the Graduate School



Shinji Satake, Ph.D.

The Graduate School of Health Sciences, Yamagata Prefectural University of Health Sciences (YPUHS) was established to improve community health, medical treatment, and welfare in 2004. Our graduate school has one specialty, but it confers three types of academic fields for consistency with our departments. Upon the completion of the master's program of a course, a graduate student can acquire a Master of Science degree (MS) in Nursing, a MS in Physical Therapy, or a MS in Occupational Therapy.

Now, graduate students come to attend our school from Akita, Iwate, Miyagi, Chiba, Tokyo, Kanagawa, Kyoto, Osaka, Hiroshima, Okinawa, as well as Yamagata. Here, they find keys to resolving problems of health, medical treatment, and welfare in their own communities. More than 160 graduate students have completed our master's program and have then progressed to play active roles in diverse fields in Japan. In addition, 25% of our faculty members are occupied as alumni of our master's course. In this way our graduate school has played an important part in the education of scholars and their employment in the Tohoku region.

YPUHS launched the doctor's (doctor of philosophy: Ph.D.) program in April, 2017. The educational goals of our Ph.D. program are the following three. First, we intend to produce leaders of health, medical treatment, and welfare for service in inter-professional collaboration and in the changing field of integrated community care. Second, we intend to cultivate professionals who can autonomously lead education and research related to health, medical treatment, and welfare based on local problems. Third, we shall nurture and develop researchers and advanced professionals to investigate and develop new care and rehabilitation services. Our students aim at the social presentation of new ideas and practices from Nursing, Physical Therapy, and Occupational Therapy studies in the Ph.D. program.

Our graduate school strengthens cooperation among the fields of nursing, physical therapy, and occupational therapy toward this aim and characterizes enforcement of professional and comprehensive education and study for one specialty that unifies these areas. Therefore, through completion of the Ph.D. program of a course, a graduate student can acquire a Ph.D. in Nursing, a Ph.D. in Physical Therapy, or a Ph.D. in Occupational Therapy.

A long with the increasing success of postgraduate education at our school, research activities of our graduate students have become very active. In late years, research results of Master and Doctor course students were accepted by many international journals. Moreover, at many congresses held inside and outside the country, our students supported the publication of their research results.

Specifically, you can learn about many more attractive features of our graduate school on our school website!



Graduate Degrees

Our Graduate School offers the following degrees.

Master's program

- Master of Science in Nursing
- Master of Science in Physical Therapy
- Master of Science in Occupational Therapy.

Ph.D. program

- Doctor of Philosophy in Nursing,
- Doctor of Philosophy in Physical Therapy
- Doctor of Philosophy in Occupational Therapy.



CAMPUS MAP

University Campus site is 57,526 m². There are many buildings :

Administration building,
Research and Practical Training building,
Auditorium,
Cafeteria,
Library,
Gymnasium.

Outside you can find an Athletic Field and Tennis Courts. To the north, Yamagata Prefectural Central Hospital is adjacent to the Campus. A Forest Park, good for the mental health of students, surrounds the Campus.





Location / Access to the University

Yamagata Prefectural University of Health Sciences is located in the northern part of Yamagata City, capital of Yamagata Prefecture. To the north of the university stands the Yamagata Prefectural Central Hospital, including 609 beds and several centers such as the center for preventing adult diseases, the emergency center and the perinatal center.

Yamagata City is located on the routes connected by the East Japan Bullet Train Line and the Tohoku-Yamagata Expressway to Tokyo.

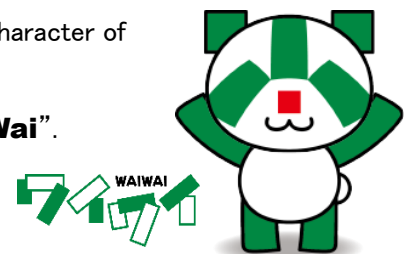
Yamagata Airport is also located near Yamagata City, with connections to Tokyo, Osaka, Nagoya and Sapporo.

The population of Yamagata Prefecture is 1,077,057 (Oct. 1st, 2019) and that of Yamagata City is 249,327 (Oct. 1st, 2019).



This is the Mascot character of our university.

Its name is **"WaiWai"**.



Yamagata Prefectural University of Health Sciences

260 Kamiyanagi, Yamagata City, Yamagata, 990-2212, Japan

URL <https://www.yachts.ac.jp>